



CEDAR CREEK
COMPANY PTY LTD

CEDAR CREEK COMPANY

Boning Room Infeed

SOFTWARE SOLUTIONS

Cedar Creek Company (CCC) specifies a Boning Room Infeed (BRI) station at the entry to each boning room. Each station will consist of a CCC touchscreen terminal with a tethered barcode scanner, and will interface with a track scale/indicator to weigh carcasses into the boning room.

Each BRI station can perform the following multiple functions:

BONING ROOM INFEED

Carcasses are weighed on the track scale, scanned and taken into the cutting room against a run or batch. Runs may be pre-determined in the system and carcasses that do not meet the specification criteria for a run are rejected or downgraded. All grade or category changes at this point may optionally force the operator to enter a reason code. Boning room input gathers all necessary input data for boning room performance and recovery analysis data.

CHILLER PERFORMANCE & WEIGHT LOSS REPORTING

Taking the weight of each carcass as it exits the chiller for cutting or loadout ensures that the system has all weight data against a carcass record to produce individual weight loss statistics and chiller performance statistics. The System will produce weight loss reports by carcass covering live weight, graded weight, hot defat weight and post chiller weight. Chiller performance reports will be produced by chiller and by mob or batch.

BONER NUMBERS AND TALLY

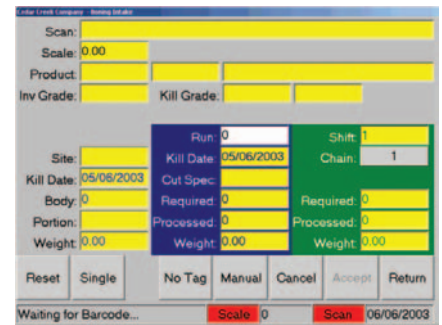
BRI provides the ability to allocate boner numbers per chain, compute chain speed accordingly, to keep track of tally points and provide tally reporting by chain and by shift.

TRANSFORMATIONS (QUARTERING)

When quartering a carcass the operator may choose to weigh the whole side or to weigh forequarter and hindquarter after cutting. The operator can pick the rib site at which the cut is made and the system will then choose the appropriate fore and hindquarter product codes for the resulting pieces. New tickets may be produced for the resulting pieces if required.

CHILLER ASSESSMENT

Chiller assessment data can be downloaded from RF Handheld Terminals or input via the touchscreen. The operator may then choose the appropriate criteria and update carcass records. When a carcass grade changes as a result of chiller assessment the System will generate a new carcass ticket.



AUSTRALIA

Head Office: Brisbane, QLD

T: +61 (0)7 3356 0999 F: +61 (0)7 3356 2366

Branch Offices: Sydney, NSW - Melbourne, VIC

E: salesenquiries@cedarcc.com.au

W: www.cedarcc.com.au

NEW ZEALAND

Head Office: Auckland, NZ

T: +64 (0)9 630 5081 F: +64 (0)9 630 5091

E: salesenquiries@cedarcc.com.au

W: www.cedarcc.com.nz

BRAZIL

Head Office: Presidente, Prudente, SP

T/F: +55 18 3916 6033

E: vendas@cedarcc.com.br

W: www.cedarcc.com.br

CHILE

Head Office: Santiago de Chile

T: +56 2 499 4400 F: +56 2 449 4402

E: info@cedarcc.com.cl

W: www.cedarcc.com.cl

CCC'S STRATEGIC PARTNERS:



Copyright © 2006 Cedar Creek Company Pty Ltd